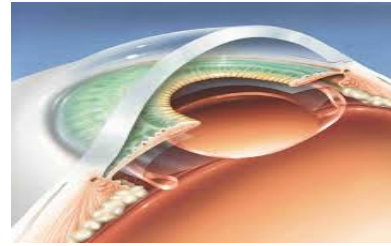
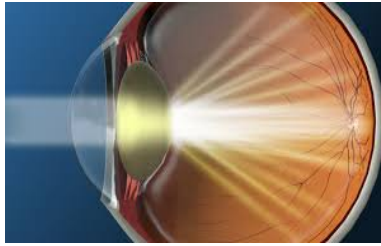


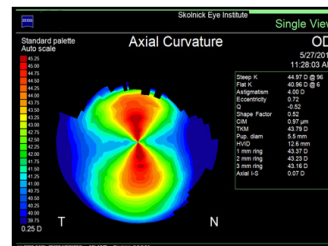
CATARACT SURGERY **LENS IMPLANT** OPTIONS



BASIC MONOFOCAL lens implant to correct distance or near vision - patients will need glasses for some or all ranges of vision - **\$375** per eye for non-covered pre-operative testing and post-op refractions during the 90 day global period

There is a **\$500.00** charge per eye for patients who have had previous refractive surgery (LASIK, LASEK, RK, PRK, etc.) to cover additional testing, refractive surgery medical records review, and complex lens power calculations. This is not covered by insurance companies or medicare and is needed to improve the accuracy of lens power calculations due to the changes made to the cornea.

ASTIGMATISM (oval-shaped cornea) **TORIC** lens implant to correct vision **better** than the basic lens - Many patients will still need reading glasses - **\$1,300.00** deposit per eye (plus surgery center collects **\$505** balance)



COMPLETE TRIFOCAL or Extended Depth of Focus lens implant to correct distance, intermediate, and near vision, including astigmatism - Intended to eliminate dependence on glasses - **\$2,300.00** deposit per eye (plus surgery center collects **\$945** balance)



SYNERGY



PANOPTIX



VIVITY



SYMPHONY

Note: Some insurance companies will not recognize the **\$150** credit that medicare gives the surgery center for an upgraded lens. The surgery center will collect this in addition to the above fees on the day of surgery.