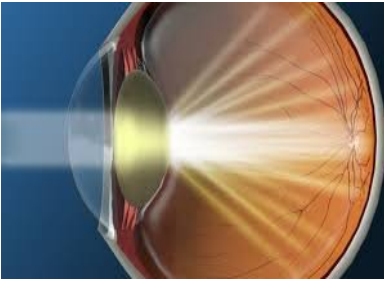


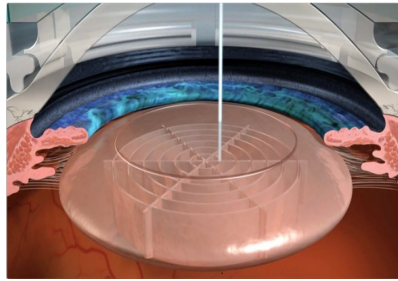
# CATARACT SURGERY OPTIONS



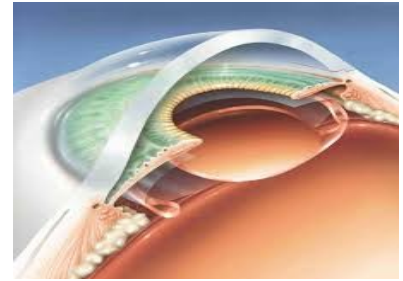
Skolnick Eye Institute



Cataract



Laser opening and lens fragmentation

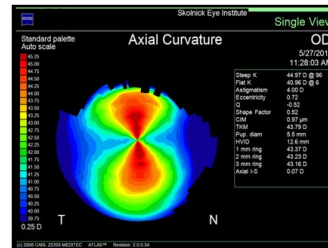


Artificial lens implant

**ASTIGMATISM** is an imperfection in the curvature or shape of the cornea that causes blurred vision and must be accounted for to have the best possible vision. It can be surgically corrected with laser (astigmatic keratotomy) or incorporated into the lens implant (Toric).



**TORIC**



Corneal Topography

**MULTIFOCAL** and **Extended Depth of Focus Lenses** (with and without astigmatism)



**ODYSSEY**



**PANOPTIX**



**VIVITY**



**APHERA**