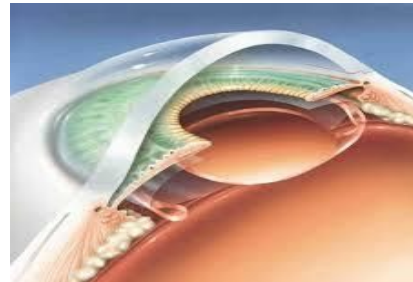
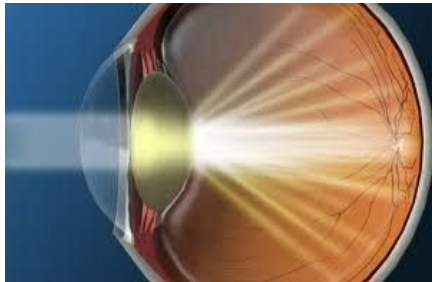




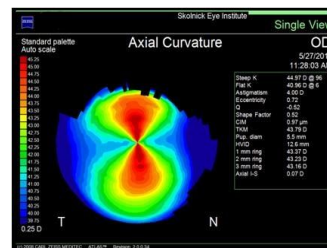
## CATARACT SURGERY **LENS IMPLANT** OPTIONS

**STANDARD** - **Monofocal** intraocular lens to correct distance **or** near vision - After surgery, patients will need glasses for some or all ranges of vision - **\$300** per eye for non-covered testing and post-op refractions - includes use of the most advanced technology aspheric lens implant

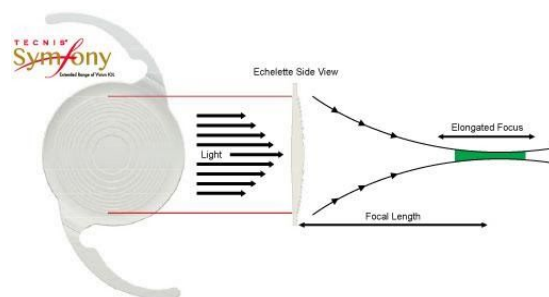
There is a **\$500.00** charge per eye for patients who have had previous refractive surgery (LASIK, LASEK, RK, PRK, etc.) to cover additional testing, refractive surgery medical records review, and complex lens power calculations. This is not covered by insurance companies or medicare and is needed to improve the accuracy of lens power calculations due to the changes made to the cornea.



**ASTIGMATISM** (oval-shaped cornea) - **Toric** intraocular lens to correct vision **better** than the standard lens - Uses corneal mapping and surgical marking - After surgery, most patients will still need reading glasses - **\$1,300.00** per eye (surgery center also collects **\$345**)



**COMPLETE** - **Trifocal or Extended Depth of Focus** intraocular lens to correct distance, intermediate, and near vision - Includes astigmatism correction - Intended to eliminate dependence on glasses - **\$2,300.00** per eye (surgery center also collects **\$785-\$945** depending on lens)



Note: Some insurance companies will not recognize the **\$150** credit that medicare gives the surgery center for an upgraded lens. The surgery center will collect this in addition to the above fees on the day of surgery.